



Beaufort County
Public Works
Stormwater Infrastructure
Project Summary

Project Summary: Clydesdale Circle

Activity: Routine/Preventive Maintenance

Narrative Description of Project:

Completion: May-15

Project improved 190 L.F. of drainage system. Cleaned out (1) catch basin and 50 L.F. of roadside ditch. Repaired sinkhole. Jetted (1) driveway pipe, (1) crossline pipe and 140 L.F. of channel pipe.

2015-586 / Clydesdale Circle	Labor Hours	Labor Cost	Equipment Cost	Material Cost	Contractor Cost	Indirect Labor	Total Cost
AUDIT / Audit Project	0.5	\$11.40	\$0.00	\$0.00	\$0.00	\$6.62	\$18.01
BKFILL / Back Fill	9.0	\$198.96	\$90.14	\$4.54	\$0.00	\$132.48	\$426.12
CBCO / Catch basin - clean out	6.0	\$134.04	\$26.04	\$23.62	\$0.00	\$89.73	\$273.43
CBREP / Catch basin - repaired	35.0	\$777.20	\$75.16	\$40.19	\$0.00	\$519.65	\$1,412.20
DPJT / Driveway Pipe - Jetted	12.0	\$268.08	\$52.08	\$26.35	\$0.00	\$179.46	\$525.97
HAUL / Hauling	15.0	\$324.45	\$119.85	\$67.75	\$0.00	\$216.30	\$728.35
ONJV / Onsite Job Visit	5.0	\$170.31	\$17.78	\$15.44	\$0.00	\$119.36	\$322.89
PRRECON / Project Reconnaissance	3.0	\$110.63	\$10.70	\$5.79	\$0.00	\$82.90	\$210.02
SR / Sinkhole repair	12.0	\$260.64	\$35.36	\$13.62	\$0.00	\$172.56	\$482.18
UTLOC / Utility locates	0.5	\$10.23	\$0.00	\$0.00	\$0.00	\$6.62	\$16.85
2015-586 / Clydesdale Circle Sub Total	98.0	\$2,265.94	\$427.11	\$197.30	\$0.00	\$1,525.67	\$4,416.01
Grand Total	98.0	\$2,265.94	\$427.11	\$197.30	\$0.00	\$1,525.67	\$4,416.01

Before



During



After



Project: Clydesdale Circle Map 1

Activity: Routine/ Preventive Maintenance

Project #: 2015-586

Township: Port Royal Island

Completed: April 2015



Legend

TYPE

- River
- Creek/Stream
- River/Creek/Marsh BANK
- Channel (fka Outfall)
- Channel Pipe
- Lateral
- Lateral Pipe
- Roadside
- Roadside Pipe
- Road Pipe
- Crossline Pipe
- Driveway Pipe
- Access Pipe
- Bleeder Pipe



1 inch = 83 feet

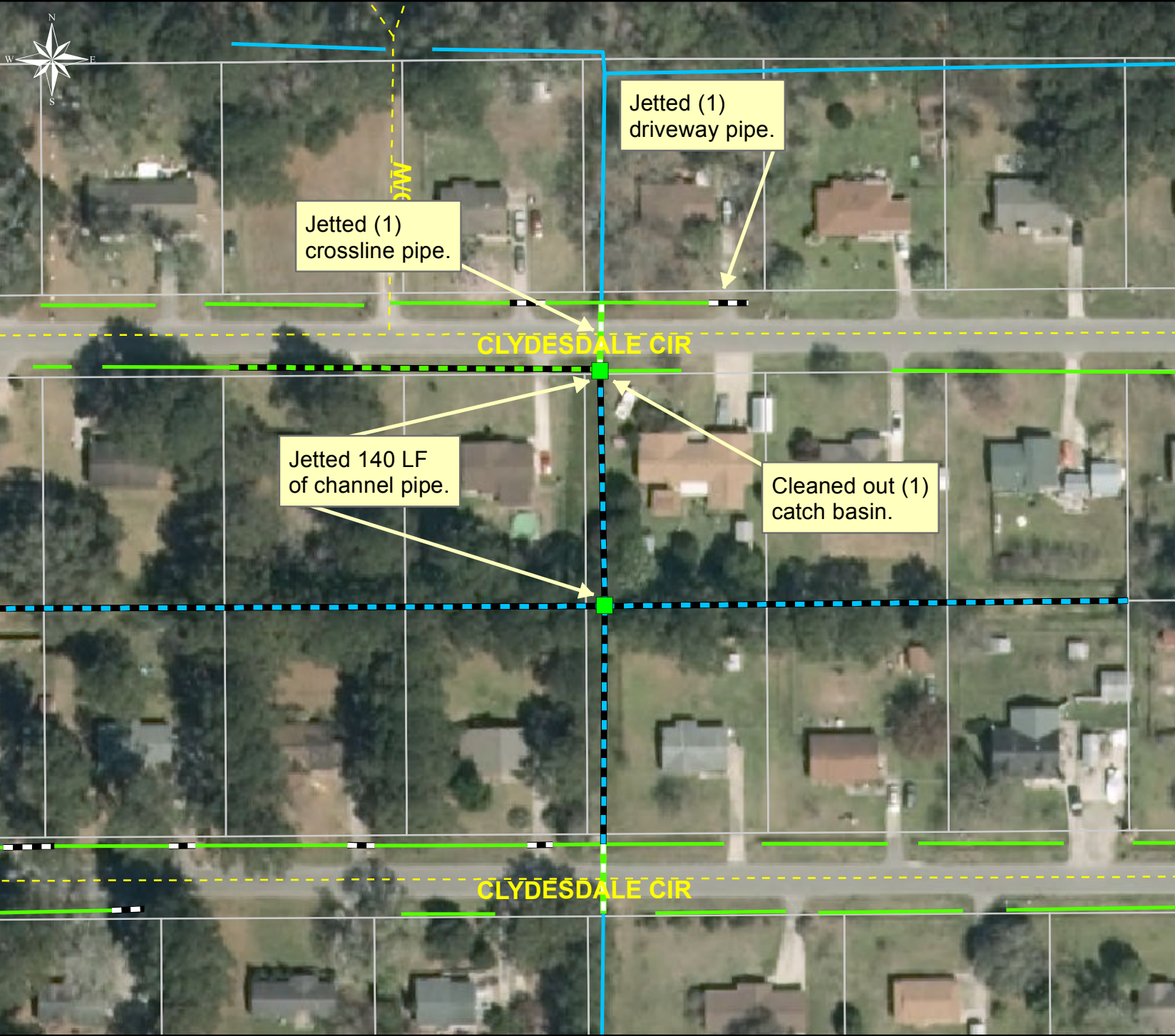
Project: Clydesdale Circle Map 2

Activity: Vacuum Truck

Project #: 2015-586

Township: Port Royal Island

Completed: April 2015



Legend	
TYPE	
	River
	Creek/Stream
	River/Creek/Marsh BANK
	Channel (fka Outfall)
	Channel Pipe
	Lateral
	Lateral Pipe
	Roadside
	Roadside Pipe
	Road Pipe
	Crossline Pipe
	Driveway Pipe
	Access Pipe
	Bleeder Pipe



1 inch = 83 feet